



WM Software
ShutdownPlus[®]
Green

Whitepaper - Quick Overview and Installation Guide

Overview, Installing, and Running the Software

Published: April 2010

Software version: 4.0

www.wmsoftware.com



wmsoftware.com
Every Server, Every User, Every Day™

Contents

Introduction	1
The ShutdownPlus Green solution	2
Features and Benefits	3
Installation and Configuration	4
Advanced Configuration.....	6
Purchasing and Registering the Software	7
Licensing.....	8
Hardware and Software Requirements	9

Introduction

As energy costs continue to rise, businesses look for ways to decrease expenses. One way is through decreasing energy costs. There are quite a few ways in IT to do this:

- **Server Consolidation/Virtualization**
- **Outsourcing Data Centers**
- **Built-In Power Management on PCs**

Server Consolidation/Virtualization reduces energy by reducing the total number of servers or server locations that an organization requires. This came about due to a number of factors, mainly running out of room in the data center along with under utilized servers. Consolidating them into one server saves a lot of money. Server Virtualization puts fully independent server operating systems, each running in a subsystem of one computer, so one physical server can run an email server, a web server, a file server, etc. Depending on the total amount of servers, savings can be substantial.

Outsourcing Data Centers allows companies to put the maintenance, upgrading, and power needs of a typical IT data center to a 3rd party that handles this for many businesses.

These solutions are great for data centers, but what about desktop PCs?

Using the **Built-In Power Management of PCs** computers does not account for how businesses and its employees actually work. A desktop PC consumes about half of the power a server does, but most all companies have far more PCs than servers, starting at about 20 desktop computers per server. Just this amount of PCs means 10 times more power is consumed by desktops than servers. For larger companies, the power difference is even greater.

Finally, what about the obvious - physically powering off computers? For small companies of 10-20 PCs or less, a person can walk around to each computer every night and shut it off. For larger companies this is not an option; also, IT departments need computers turned on at certain times to send out Windows updates once a week.

The most astonishing metric, though, is according to the Lawrence Berkeley National Lab Report:

On average, 64% of business computers are left on 24x7

What does all this mean? Simple - excessive costs from PCs that are needlessly powered on. Efforts to save energy/money need to be focused at the desktop rather than the data center. This will account for the largest and easiest savings path.

The problem? PCs need better power management features than what comes built-in.

The ShutdownPlus Green solution

To facilitate a better PC power management solution, WM Software created its ShutdownPlus Green software product. It takes over and replaces the built-in power management features focused on businesses. Namely, it configures itself to meet the unique goals of two groups:

- **The Company**
- **The Employee**

The Company - its goals are to minimize the energy used by computers

The Employee - their goal is to get their work done with minimal interruptions.

To maximize savings, the Company optimally wants the computers only running when an employee is using them, so the computer will only be running when the person is at their desk or station. This is in a direct conflict with the Employee, who wants their computer on all the time so as to not interrupt their workflow.

From an energy perspective, it would appeal to the Company to have the computer go into Sleep if it is idle for more than one minute. This of course would easily frustrate the Employee who would be constantly turning their computer on from Sleep mode. ShutdownPlus Green can meet both goals simultaneously.

ShutdownPlus Green's solution is to divide the day into Working and Non-Working hours. During Working hours, the Employees goals are met, and during Non-Working hours, the Company's goals are met. Let's take a simple scenario:

- **During working hours (8am - 5pm), the computer goes into Sleep when idle for more than 5 hours.**
- **Outside of working hours, the computer goes into Sleep when idle for more than 15 minutes.**

This is exactly how ShutdownPlus Green works, and both the company and employee are happy because each of them has their goals met. In addition, the software:

- Uses the operating system's settings for powering off the monitor and hard drive.
- Can power off the computer when it is idle if no user is logged on.
- Can automatically turns on the computer at the start of the day.

Features and Benefits

- Turn on or disable the automatic logon on groups of computers from one location.
- Easy to justify cost/benefit analysis model for any size business.
- Configurable through either Group Policy or the WM Software Product Management Console
- Idle detection can be enabled in a specific timeframe.
- You can set idle detection to be active for Administrators, Standard Users, or both.
- Works with all 32-bit and x64 versions of Windows 2000, XP, Vista, 2003, 2008, and 7.
- Microsoft Certified for Windows 7 and Vista.
- Enterprise licensing is available.

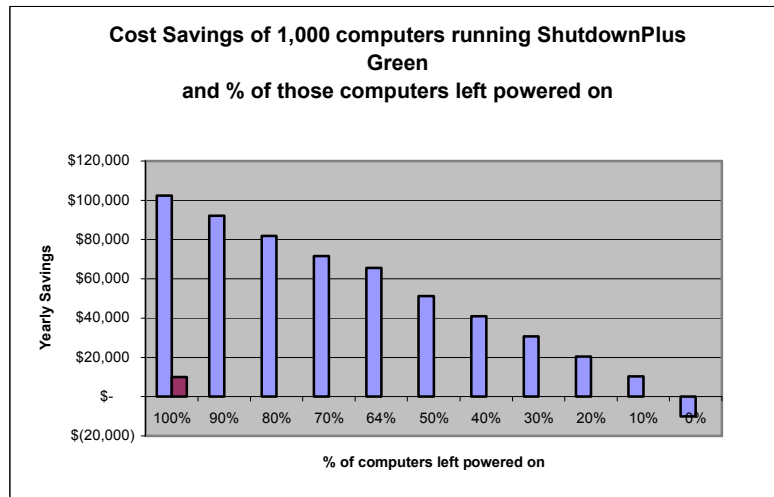


Fig a. Even with only 10% of computers left on, money is saved with ShutdownPlus Green.

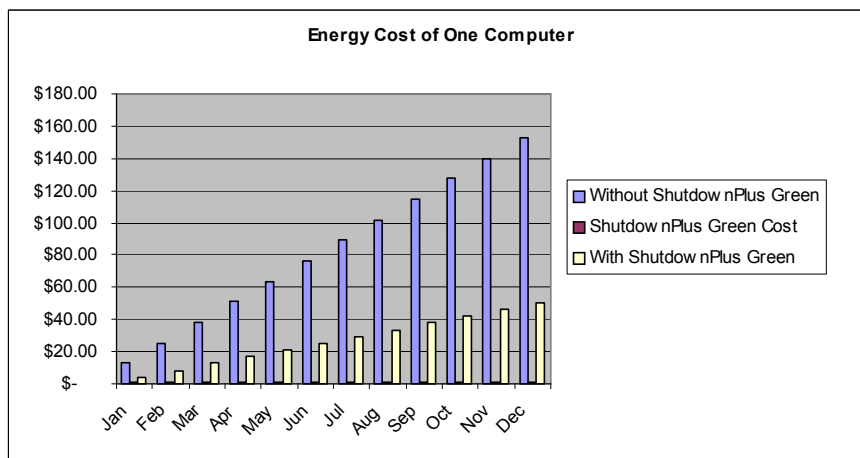


Fig b. The cumulative savings over just one year are substantial.

Installation and Configuration

Install and configure the software as follows::

1. Log in to your computer running Windows XP or higher, preferably as an administrator, although this is not necessary.
2. Run the installation program. To install by only pressing one button, press One-Click. Otherwise, press Advanced to set the destination folder. By pressing One-Click, you are agreeing to the end-user license agreement (EULA) which resides in the programs installation folder. See Fig 1.



Fig 1. The main installation screen.

3. After installation, select the checkbox to launch the software. You will be presented with a window to **Continue** to run the software, **Purchase** the software, or **Register** the software. You can also optionally view the license file in the software's startup screen. The window will show you how many days are left in the evaluation, which you can also check in the software product's Help/About menu. Click on the End User License Agreement to view it, then press **Continue**.

4. From here, you can begin to setup the software. A Wizard will appear and setup ShutdownPlus Green's parameters such as Working Hours, Action during Non-Working Hours, No Users Logged On Action, and when to Power On the computer. See Fig 2.

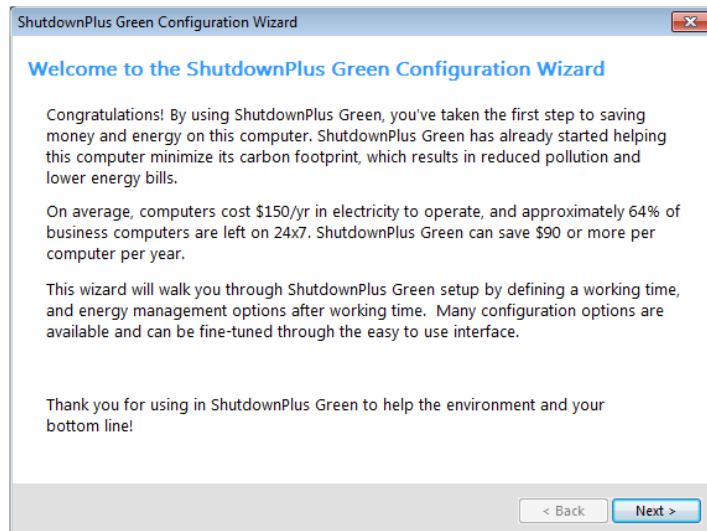


Fig 2. The Wizard software screen.

5. The Configure tab shows all of the settings. Clicking on a setting changes it. These settings can also be changed through (a)Group Policies or (b)WM Software Product Management Console. See Fig 3.



Fig 3. The Configure tab in ShutdownPlus Green

Advanced Configuration

ShutdownPlus Green allows many more configurable options on the Advanced tab. Some options include:

- Displaying a notification before an idle action takes place.
- Save any open documents if the session ends.
- Active Directory security integration
- Group Policy configurable
- Set the computer's watt usage and cost of electricity.



Fig 4. Advanced configuration

Purchasing and Registering the Software

Each of WM Software's software products are fully functional and will run with an evaluation license for a 30-day period. This allows you to test our software in your environment with no restrictions. To continue running the software beyond the 30-day evaluation period, each software license needs registered. We have made this process very quick and easy for the end user.

It's easy to purchase and run the software beyond it's initial 30-day evaluation period:

1. Purchase the software from our website or your reseller. For a list of WM Software authorized resellers, please contact our sales department.
2. We will process your order and send you an id/password to register the software. The id will be your customer number with WM Software.
3. Run the software and choose Register from the Help menu. If it is not installed, install the software again. If the software has expired, you can still install it to get to the **Register** option in the initial software window.
4. Choose Automatic Registration, enter your id/password, and press Register. The software will contact our registration database and automatically register the software.
5. Your software is now registered!

If you decide not to purchase the software, simply uninstall it from the Windows Control Panel applet.

On Windows 2000, XP, and 2003, choose **Add or Remove Programs**

On Windows Vista, 2008, and 7, choose **Uninstall a program (Programs and Features)**.

Contact our sales department today for a license quotation. We accept POs, GSAs, and credit cards, and have 100+ WM Software Authorized resellers in over 20 countries.

<http://www.wmsoftware.com/contact>

Licensing

WM Software has two types of licensing for its customers. Term Licensing and Perpetual Licensing.

- Term Licensing
 - a) Our Term Licensing Program (TLP) license model reduces costs of our software by 2/3 through an annual use term license instead of the typical perpetual license purchase. This is still saving money with 10 years of continuous licensing.

This program allows companies to put the software licenses into their operational budget instead of their capital budget. This licensing is more cost effective than purchasing a software license and then paying a yearly maintenance fee for updates and technical support.

Full maintenance, which includes free version updates and technical support, are included for the length of the term.

The TLP licenses can be renewed.

- Perpetual Licensing
 - a) This license model is what you will receive if you do not purchase a TLP license. You can receive quantity discounts with this license - check with your sales person.

A yearly maintenance fee is available, which includes free version updates and technical support, and is renewable.

Please contact your sales person if you have questions about our licensing models.

Hardware and Software Requirements

The following hardware and software requirements are necessary to use this software:

- **Operating System.**

Windows XP Professional with Service Pack 2 or later installed, Windows Vista with Service Pack 1 or later installed, Windows 7, Windows Server 2003 with Service Pack 2 or later installed, Windows Server 2008 or 2008 R2.

- **Hardware.** A system with at least 256 Mb of RAM and a Pentium III or better CPU is required. The client consumes approximately 200kB RAM and 2MB Hard Drive space.

ShutdownPlus is a registered trademark of WM Software.

The information contained in this document represents the current view of WM Software Corporation on the issues discussed as of the date of publication. Because WM Software must respond to changing market conditions, it should not be interpreted to be a commitment on the part of WM Software, and WM Software cannot guarantee the accuracy of any information presented after the date of publication.

This white paper is for informational purposes only. WM SOFTWARE MAKES NO WARRANTIES, EXPRESS OR IMPLIED, IN THIS DOCUMENT.

Complying with all applicable copyright laws is the responsibility of the user. Without limiting the rights under copyright, no part of this document may be reproduced, stored in, or introduced into a retrieval system, or transmitted in any form or by any means (electronic, mechanical, photocopying, recording, or otherwise), or for any purpose, without the express written permission of WM Software Corporation.

WM Software may have patents, patent applications, trademarks, copyrights, or other intellectual property rights covering subject matter in this document. Except as expressly provided in any written license agreement from WM Software, the furnishing of this document does not give you any license to these patents, trademarks, copyrights, or other intellectual property.

© WM Software Corporation. All rights reserved.

Microsoft, Windows, and the Windows logo are either registered trademarks or trademarks of Microsoft Corporation in the United States and/or other countries.

All other trademarks are property of their respective owners.