

## **Quick Install Guide - Safe AutoLogon**

For First-time Users - Installing and Running the Software

Published: February 2010

Software version: 3.0



## **Contents**

Introduction .....	1
Safe AutoLogon solution.....	2
Installation and Configuration .....	3
Purchasing and Registering the Software .....	5
Licensing.....	7
Advanced Configuration.....	5
Hardware and Software Requirements .....	8

## Introduction

Starting with Microsoft Windows NT, there has been a way of automating the logon process by storing the username, password, and domain name in the registry database. These can be set either manually or through a utility such as TweakUI. This feature permits other users to start the computer and to use the account in the registry database to automatically log on. The registry key (HKLM\SOFTWARE\Microsoft\Windows NT\CurrentVersion\Winlogon) that stores this information is remotely readable by the Authenticated Users group.

However, using this feature can pose a serious security risk because the username, password, and domain name are all stored in unencrypted clear text, making it relatively easy for anyone to see.

Another problem arises when a user wants to bypass the automatic logon. The user can bypass automatic logon by holding down the SHIFT key as Windows is starting. The problem of bypassing the automatic logon feature is that the original DefaultUserName is no longer kept for subsequent logons, because the name of the last user to logon is retained in the Username box of the Welcome dialog box and the Registry. To re-enable the automatic logon once again, the original username and password must be entered again in the registry.

## **Safe AutoLogon solution**

To enable automatic logon, WM Software created Safe AutoLogon. This software product stores the user-name, password, and domain in a AES/Triple DES encrypted format using the maximum encryption the operating system is capable of, typically 256-bit. This high-strength encryption keeps the logon information safe from spy ware, viruses, mal ware, or malicious users that try and gain access to the logon information.

This software has many uses for companies that need to provide employees with access to certain network resources and avoid help desk issues of forgotten usernames/passwords. With its companion products, passwords are centrally managed, synched with Active Directory, and, remotely managed.

Since this product bypasses the Ctrl-Alt-Del prompt, it is obviously not recommended to logon users that have access to confidential and/or private network resources.

## Installation and Configuration

Install and configure the software as follows::

1. Log in to your computer running Windows XP or higher, preferably as an administrator, although this is not necessary.
2. Run the installation program. To install by only pressing one button, press One-Click. Otherwise, press Advanced to set the destination folder. By pressing One-Click, you are agreeing to the end-user license agreement (EULA) which resides in the programs installation folder. Before continuing to run the software, you can optionally view this file (license.rtf) in the software's startup screen. See Fig 1.



Fig 1. The main installation screen.

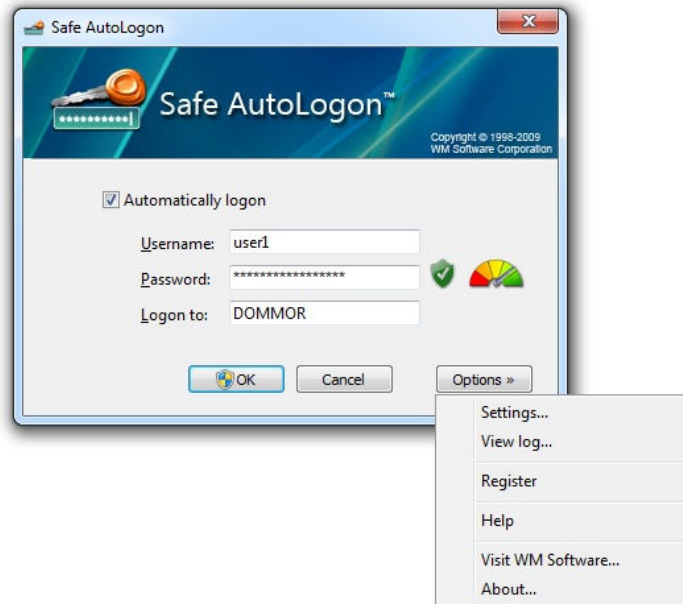
3. After installation, select the checkbox to launch the software. You will be presented with a window to **Continue** to run the software, **Purchase** the software, or **Register** the software. The window will show you how many days are left in the evaluation, which you can also check in the software product's Help/About menu. Click on the End User License Agreement to view it, then press **Continue**.

4. From here, you can begin to setup the software. The username and domain/computer-name should automatically be filled in with the current username. Move the mouse pointer over the shield (encryption strength) and password complexity meter for an explanation. See Fig 2.



Fig 2. The main software screen.

5. Now, reboot your computer and Safe AutoLogon will automatically logon to your desktop. For more choices in Safe AutoLogon, press the Options button. Settings allow you to keep the user logged on, lock the desktop after a logon, delay the automatic logon, and specify servers running Safe AutoLogon Password Server. See Fig 3.

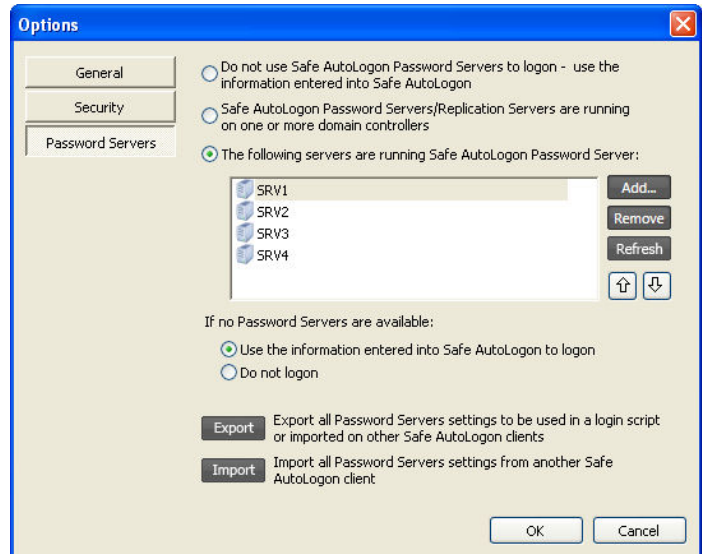


**Fig 3. Additional choices in Safe AutoLogon.**

## Advanced Configuration

Safe AutoLogon allows Password Servers to be defined for automatic Safe AutoLogon client password updating. Configure the software as follows::

1. Run Safe AutoLogon and choose **Options/Settings/Password Servers**.
2. Choose where the SALPS software are located (on Domain Controllers or other servers)  
*The names of the Domain Controllers can also be in the list, but by selecting the option to use Domain Controllers, the Safe AutoLogon client will find them automatically.*
3. Enter the SALPS server names in the list.
4. Choose the action to take if Safe AutoLogon is unable to connect to the SALPS servers. We recommend **"Do not logon"**. Otherwise, if too many clients try to authorize in Active Directory with an invalid password, the same account may be locked out.



**Fig 4. In this configuration, the SALPS servers are listed with the option to use them. Also, this client will use the information stored locally if no SALPS servers are available. This is an administrative decision; the username could get locked out of the domain if too many unsuccessful logon attempts are made.**

To send the list of SALPS servers to a client, this can be done either through a registry file at logon or through the **WM Software Management Console** software product.

## Purchasing and Registering the Software

Each of WM Software's software products are fully functional and will run with an evaluation license for a 30-day period. This allows you to test our software in your environment with no restrictions. To continue running the software beyond the 30-day evaluation period, each software license needs registered. We have made this process very quick and easy for the end user.

If you decide not to purchase the software, simply uninstall it from the Windows Control Panel applet. On Windows 2000, XP, and 2003, choose **Add or Remove Programs**; on Windows Vista or higher, choose **Uninstall a program (Programs and Features)**.

If you decide to purchase the software to run it beyond it's initial 30-day evaluation period:

1. Purchase the software from our website or your reseller. For a list of WM Software authorized resellers, please contact our sales department.
2. We will process your order and send you an id/password to register the software. The id will be your customer number with WM Software.
3. Run the software and choose Register from the Help menu. If it is not installed, install the software again. If the software has expired, you can still install it to get to the **Register** option in the initial software window.
4. Choose Automatic Registration, enter your id/password, and press Register. The software will contact our registration database and automatically register the software.
5. Your software is now registered!

## Licensing

WM Software has two types of licensing for its customers. Term Licensing and Perpetual Licensing.

- Term Licensing
  - a) Our Term Licensing Program (TLP) license model reduces costs of our software (up to 66%) through an annual use license instead of the typical perpetual license purchase.

This program allows companies to put the software licenses into their operational budget instead of their capital budget. This licensing is more cost effective than purchasing a software license and then paying a yearly maintenance fee for updates and technical support.

Full maintenance, which includes free version updates and technical support, are included for the length of the term.

The TLP licenses can be renewed.

- Perpetual Licensing
  - a) This license model is what you will receive if you do not purchase a TLP license. You can receive quantity discounts with this license - check with your sales person.

A yearly maintenance fee is available, which includes free version updates and technical support, and is renewable.

Please contact your sales person if you have questions about our licensing models.

## Hardware and Software Requirements

The following hardware and software requirements are necessary to use this software:

- **Operating System.**

**Safe AutoLogon client:** Windows XP Professional with Service Pack 2 or later installed, Windows Vista with Service Pack 1 or later installed, Windows 7, Windows Server 2003 with Service Pack 2 or later installed, Windows Server 2008 or 2008 R2.

**Safe AutoLogon Password Server:** Windows XP Professional with Service Pack 2 or later installed, Windows Vista with Service Pack 1 or later installed, Windows 7, Windows Server 2003 with Service Pack 2 or later installed, Windows Server 2008.

- **Hardware.** A system with at least 256 Mb of RAM and a Pentium III or better CPU is required. The client consumes approximately 200kB RAM and 2MB Hard Drive space.

The Safe AutoLogon software and the Safe AutoLogon Password Server software are patent-pending and developed exclusively by WM Software.

The information contained in this document represents the current view of WM Software Corporation on the issues discussed as of the date of publication. Because WM Software must respond to changing market conditions, it should not be interpreted to be a commitment on the part of WM Software, and WM Software cannot guarantee the accuracy of any information presented after the date of publication.

This white paper is for informational purposes only. WM SOFTWARE MAKES NO WARRANTIES, EXPRESS OR IMPLIED, IN THIS DOCUMENT.

Complying with all applicable copyright laws is the responsibility of the user. Without limiting the rights under copyright, no part of this document may be reproduced, stored in, or introduced into a retrieval system, or transmitted in any form or by any means (electronic, mechanical, photocopying, recording, or otherwise), or for any purpose, without the express written permission of WM Software Corporation.

WM Software may have patents, patent applications, trademarks, copyrights, or other intellectual property rights covering subject matter in this document. Except as expressly provided in any written license agreement from WM Software, the furnishing of this document does not give you any license to these patents, trademarks, copyrights, or other intellectual property.

© WM Software Corporation. All rights reserved.

Microsoft, Windows, and the Windows logo are either registered trademarks or trademarks of Microsoft Corporation in the United States and/or other countries.

All other trademarks are property of their respective owners.