

Quick Install Guide – License Administration Server

For First-time Users - Installing and Running the Software

Published: April 2011

Software version: 1.0

Contents

Introduction	1
License Administration Solution	2
Setup.....	3
Installing an SRV record on DNS.....	5
Installing Product Keys	6
Managing Computers.....	8
Hardware and Software Requirements	9

Introduction

You may be familiar with software activation if you've installed and activated Microsoft Windows or Microsoft Office lately. That software requires you to enter a set of numbers and letters to activate the software on the computer, usually over the Internet. Since 1998, WM Software's product licenses have also used product activation, but in a simpler form to make sure your software license is genuine, protect you and your company from the risks associated with non-genuine software, and helping you better manage your licensing agreements with WM Software. Additionally, activated products are fully supported by WM Software.

In the past, customers received a single customer id and password for all products within their organization to activate their licenses with WM Software activation servers. This ID and Password were entered on each computer for each WM Software product being activated. This activation method was quite simple to do, depending on the organization, for up to about 100 computers.

For larger license installations, WM Software also provided a volume licensing model that did not require activation, making it easy for organizations to deploy our software. However, this increased the risk of deploying non-volume licensed software, which is downloadable from our website, and organizations were finding it difficult to manage the amount of licenses they purchased versus what they were actually running. Custom installation files also created delays for customers in getting their volume license software.

License Administration Solution

WM Software has eliminated all of these past issues with a seamless and integrated solution – the WM Software License Administration Server software. All quantities of software license purchases now require activation, but now the software licenses are centrally managed at your organization. Activation is part of your organization's software deployment process, and it's a core piece of the licensing planning stage. Based on the size and structure of your organization, management of client and server product activation may involve a variety of different IT roles and individuals.

WM Software's License Administration Server, or LAS, provides centralized license management and protection of your organization's product keys, and it also assists with license compliance. As you get ready to deploy, you'll need to understand how to activate the software products by using this whitepaper.

It is only necessary, and the LAS is only designed for, to have one LAS server per domain on your network.

Setup

Install and configure the software as follows::

1. Decide which host computer will run the License Administration Server (LAS) in your organization. The host computer should be on and accessible 24x7, typically a server. It also needs to be running Windows 2003 with Service Pack 2 or higher, or Windows 2008 with Service Pack 1, or Windows 2008 R2.

2. Run the installation program. Press Next, accept the license agreement, then press One-Click Install. Otherwise, press Advanced to set the destination folder. See Fig 1.



Fig 1. The main installation screen.

3. After installation, select the checkbox to launch the software. You will be presented with a window to **Continue** to run the software. If the software has never been installed on the computer, or if SQL Server Compact Edition 3.5 SP2 is not installed, a window will notify you and ask to install SQL Server CE. Press **Yes** and the SQL Server CE software will be installed. See Fig 2.

4. From here, you can run the License Administration Server from the WM Software License Administration Server program group.

5. You will also need to make sure port 445 is open on the LAS server and across any routers. If you do not have domain administrator rights, please contact your domain administrator.

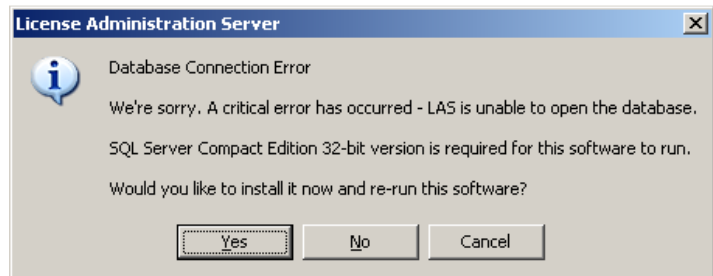


Fig 2. Install SQL Server Compact Edition 3.5 SP2.

6. With the software running, you will see two branches on the left: **Licenses** and **All Computers**. The **Licenses** branch is where you add your product key from WM Software. The **All Computers** branch shows all licensed computers. If you are running more than one WM Software product at your organization, each product key will have a separate entry. See Fig 3.

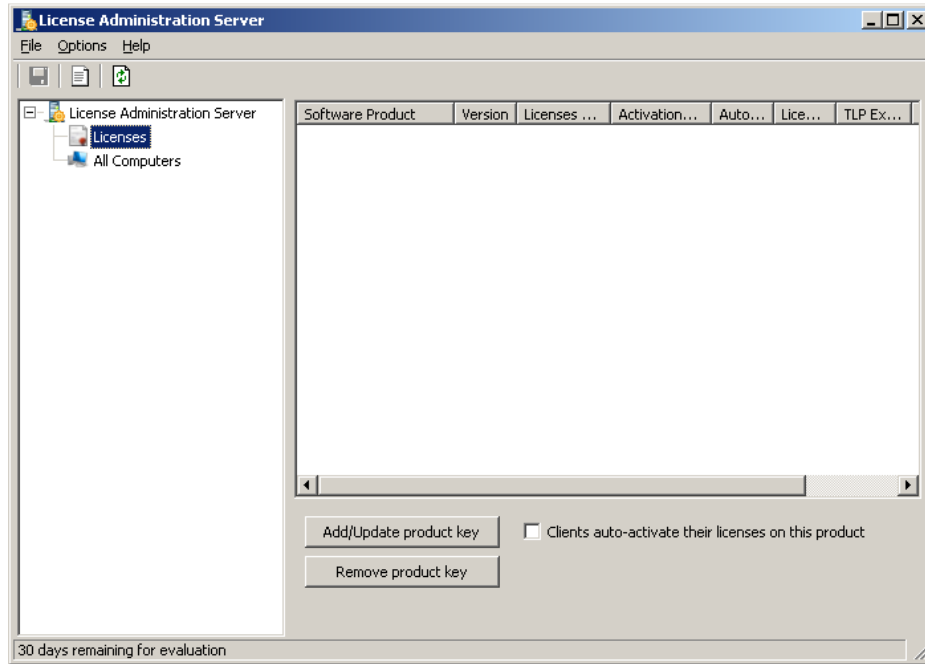


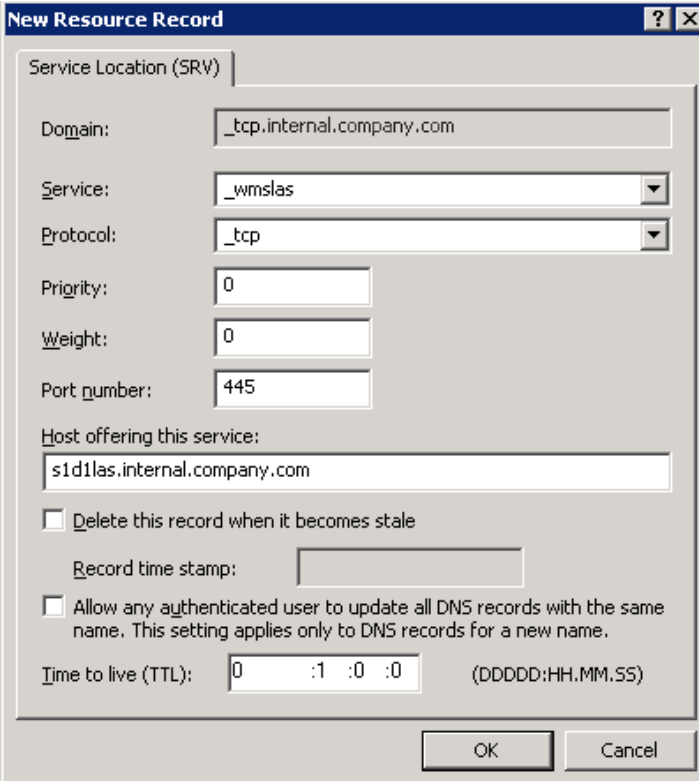
Fig 3. The main software screen.

Installing an SRV record on DNS

After installing LAS, you then register the LAS computer name in DNS using an SRV record. Computers attempting to activate will then know where the LAS server is located, as they look for the **_wmslas** SRV record using DNS. Here are the steps to manually add an SRV record to a Windows Active Directory computer running DNS. The following steps are taken from a Windows Server 2003 DNS server. These steps may vary; contact your domain administrator if necessary.

1. From Start/Run, type in `dnsmgmt.msc` and press OK
2. Choose **_tcp** under “DNS\[server_name]\Forward Lookup Zones\[fqdn]”
3. Right-click on **_tcp** and choose “Other New Records...”
4. Choose **Service Location (SRV)** and press **Create Record...**
5. Fill in the following fields and then press **OK** (See Fig 4)
 - a. Service: **_wmslas**
 - b. Port number: **445**
 - c. Host offering this service: **[las_server_name].[fqdn]**

Now the clients will be able to find the host LAS server.



The screenshot shows the 'New Resource Record' dialog box with the 'Service Location (SRV)' tab selected. The fields are filled as follows:

- Domain: `_tcp.internal.company.com`
- Service: `_wmslas`
- Protocol: `_tcp`
- Priority: `0`
- Weight: `0`
- Port number: `445`
- Host offering this service: `s1d1las.internal.company.com`

Additional options include:

- Delete this record when it becomes stale
- Record time stamp: (empty field)
- Allow any authenticated user to update all DNS records with the same name. This setting applies only to DNS records for a new name.
- Time to live (TTL): `0 : 1 : 0 : 0` (DDDD:HH.MM.SS)

Buttons for 'OK' and 'Cancel' are visible at the bottom right.

Fig 4. From Windows Server 2003.

Installing Product Keys

When you purchase your software licenses from WM Software, you will be given three data items:

1. Customer ID
2. Password
3. Product Key for your purchase

To enter a product key into the LAS, first open up the LAS from Start/Programs. Then, once opened, click on the **Licenses** branch on the left hand side of the LAS, and then press the **Add/Update product key** button. A window will display allowing you to enter this information. See Fig 5.

You can press the Verify button to make sure the ID and Password you entered are correct.

Press OK to add the Product Key. Next, a window will appear asking to enable Automatic Activation.

Enabling Automatic Activation

(recommended) will automatically activate computers running your licensed WM Software software licenses with the LAS server with no further intervention. See Fig 6.

If manual activation is desired, then select **No**. You will have to then go to each computer and activate the license. This might be applicable if you want to more closely control which computers get activated and which are run in a 30-day evaluation mode.

Fig 5. In this window, enter the ID, Password, and Product Key given to you by WM Software.

Software Product	Version	Licenses Purchased	Activations Remaining	Auto-Activate	License Type	TLP Expiration	Maintenance Expiration
ShutdownPlus Rolling Restart	8.1	40	40	Yes	TLP	3/27/2012	

Fig 6. The populated product key entry.

Let's go over each of the columns for the product key:

Software Product	This is the name of the software product your organization purchased.
Version	This is the version of the software product at the time your organization purchased the licenses. This works differently in a few scenarios: 1) If your licenses are current, then if you activate a software license that is higher or lower than the listed version, the license will be activated. 2) If your TLP has expired, no license can be activated. In this case, contact WM Software to renew your TLP. 3) If your maintenance has expired and you try activating a newer version than what is listed, the license will not be activated. In this case, contact WM Software to renew your maintenance. 4) If your maintenance has expired, and a newer version of the software was released while your maintenance was in force, but the newer version is not showing in the LAS, contact WM Software for an updated product key.
Licenses Purchased	This is the quantity of licenses purchased. Each computer uses one license.
Activations Remaining	This is how many more license activations are left.
Auto-Activate	When this is set to Yes, when a client computer has the software installed, or its service restarted, it will automatically activate with the LAS. If you want to manually add computers or manually license them at the computer, then highlight the product key and uncheck the checkbox "Auto-Activate"
License Type	There are two license types available from WM Software: 1) Standard. This license has maintenance and allows upgrades while maintenance is in force. The software will continue to run even if the maintenance period expires. 2) TLP. This license is a Term License Program type of license. It allows upgrades while the TLP is in current term. If the TLP expires, the client software will no longer run. This type of license requires annual renewal with a new product key from WM Software.
TLP Expiration	The date the TLP license expires.
Maintenance Expiration	The date the maintenance expires for Standard licenses.

At this point, you are ready to activate licenses. If you set Auto-Activate to Yes, simply install the software on a client computer. If you set it to No, on the client computer, select Activate under the Help menu and choose LAS. You can then manually Activate the license with the LAS.

Managing Computers

The LAS keeps track of what computers are running what licenses. You can pre-add computers to consume an activation, unlicense computers, or print the list of computers.

Select **All Computers** from the branch on the left. You are then shown a list of computers that have activated their license, and what product and version was activated, and you can filter licenses by product code.

If you set **Auto-Activate** to **No** on the **Licenses** branch, then you can either manually activate existing licenses on a client computer, or you can pre-add client computers on the LAS. Then, when the software is installed, the license will be automatically activated.

Hardware and Software Requirements

The following hardware and software requirements are necessary to use this software:

- **Operating System.**
Windows Server 2003 with Service Pack 2 or later installed, Windows Server 2008 or 2008 R2.
- **Hardware.** A system with at least 256 Mb of RAM and a Pentium III or better CPU is required. The client consumes approximately 200kB RAM and 2MB Hard Drive space.

The information contained in this document represents the current view of WM Software Corporation on the issues discussed as of the date of publication. Because WM Software must respond to changing market conditions, it should not be interpreted to be a commitment on the part of WM Software, and WM Software cannot guarantee the accuracy of any information presented after the date of publication.

This white paper is for informational purposes only. WM SOFTWARE MAKES NO WARRANTIES, EXPRESS OR IMPLIED, IN THIS DOCUMENT.

Complying with all applicable copyright laws is the responsibility of the user. Without limiting the rights under copyright, no part of this document may be reproduced, stored in, or introduced into a retrieval system, or transmitted in any form or by any means (electronic, mechanical, photocopying, recording, or otherwise), or for any purpose, without the express written permission of WM Software Corporation.

WM Software may have patents, patent applications, trademarks, copyrights, or other intellectual property rights covering subject matter in this document. Except as expressly provided in any written license agreement from WM Software, the furnishing of this document does not give you any license to these patents, trademarks, copyrights, or other intellectual property.

© WM Software Corporation. All rights reserved.

Microsoft, Windows, and the Windows logo are either registered trademarks or trademarks of Microsoft Corporation in the United States and/or other countries.

All other trademarks are property of their respective owners.